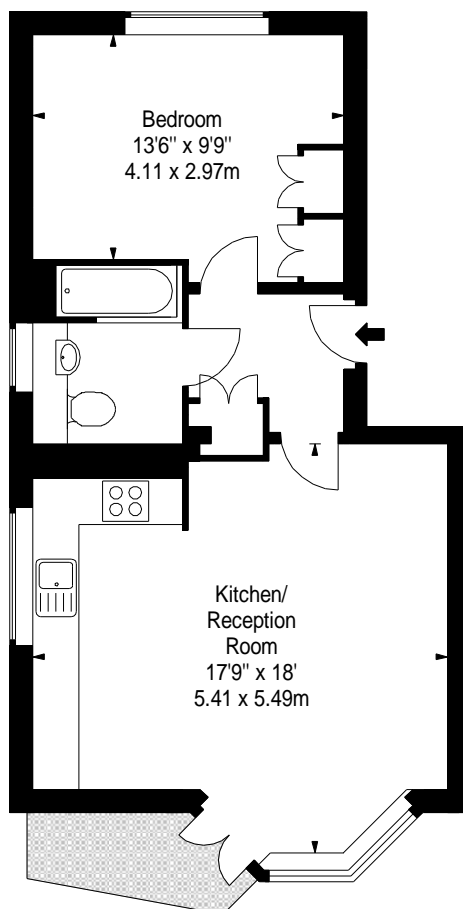


**Flat 5,  
Priory Lodge,  
Kew Bridge Court, W4**  
Approx. Gross Internal Area \*  
**527 Ft<sup>2</sup> - 48.96 M<sup>2</sup>**



**First Floor**

**Illustration For Identification Purposes Only. Not to Scale**

**\* As Defined by RICS - Code of Measuring Practice**

**B K R**  
FLOORPLANS

(OFFICES THROUGHOUT THE UK)

T: 0845 257 2023  
[WWW.BKRFLOORPLANS.CO.UK](http://WWW.BKRFLOORPLANS.CO.UK)  
2007